



Primus blue INSIDE

Seamless Design - Skilfully crafted: HL542Prblue

The shower and floor drain HL542Prblue is the easy and safe drainage solution for seamless floor surfaces. The drain is suitable for different layer thicknesses (from 1 to 7 mm) thanks to the adjustable stainless-steel frame. The stainless-steel flange guarantees a secure connection to the coating material and prevents moisture from penetrating the floor surface. The article HL542Prblue.0 which is produced without fleece covered foil should be used whenever no waterproofing is necessary below the final layer of the liquid floor coating, e.g. industrial floors in technical rooms, commercial kitchens, garages or warehouses. For higher loads, a separate stainless-steel grate is available. It can be used for load class L15 (up to 1,5 tons max.)

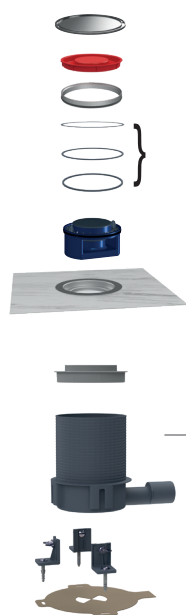
Easy:

- Clearly defined interfaces across all construction phases based on different mounting sets
- Easy installation through the height adjustable drain body (System HL540/HL541/HL570)
- Adjustable to the finished floor level during the floor coating process based on the height adjustable stainless-steel frame. This promises compatibility with covering materials of different layer thicknesses.

Safe:

- The stainless- steel flange and frame guarantees a perfect connection to the coating material and prevents moisture from penetrating the floor surface.
- The sealing set ensures a leak tight connection to the drain body as well as the safe integration to the composite sealing
- Improved safety protection against smells coming out of the drain, due to the Primus blue trap system

HL542Prblue



Combined cover

Stainless-steel frame

Extension rings

Hybrid trap system Prblue

Waterproofing set with fleece covered foil

Stainless steel flange without fleece

HL541 drain body

HL542Prblue.0



Technical information

Installation height: 63 - 200 mm (230 mm)

Capacity: 0.4 l/s

Odour barrier: **Primus blue**, hybrid trap, combining a mechanical trap and a water trap

Grates: Combined cover, stainless-steel Ø 129 mm (K3-300kg), optional cover for heavy loads (L15-1,5t)



HL Hutterer & Lechner GmbH
Brauhausgasse 3-5
A-2325 Himberg, Austria
T: +43 / (0)2235 / 862 91-0
F: +43 / (0)2235 / 862 91-31
office@hl.at
www.hl.at